



GREAT ASHBY COMMUNITY COUNCIL POLICING DATA

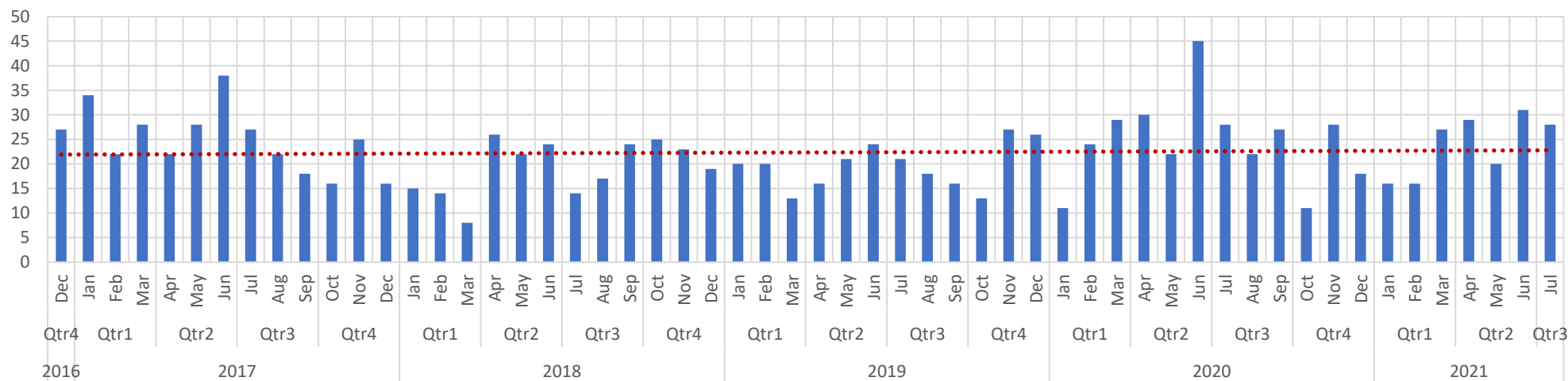
Q2 2021

Prepared by Ian Brown

Analysis of data provided in this report was sourced from the publicly available police uk crime data which provides a snapshot of crimes and anti-social behaviour for neighbourhoods on a monthly basis. The information provided is subject to change and can be reclassified following further investigation.

Crime category	Description
Anti-social behaviour	Includes personal, environmental and nuisance anti-social behaviour.
Bicycle theft	Includes the taking without consent or theft of a pedal cycle.
Burglary	Includes offences where a person enters a house or other building with the intention of stealing.
Criminal damage and arson	Includes damage to buildings and vehicles and deliberate damage by fire.
Drugs	Includes offences related to possession, supply and production.
Other crime	Includes forgery, perjury and other miscellaneous crime.
Other theft	Includes theft by an employee, blackmail and making off without payment.
Possession of weapons	Includes possession of a weapon, such as a firearm or knife.
Public order	Includes offences which cause fear, alarm or distress.
Robbery	Includes offences where a person uses force or threat of force to steal.
Shoplifting	Includes theft from shops or stalls.
Theft from the person	Includes crimes that involve theft directly from the victim (including handbag, wallet, cash, mobile phones) but without the use or threat of physical force.
Vehicle crime	Includes theft from or of a vehicle or interference with a vehicle.
Violence and sexual offences	Includes offences against the person such as common assaults, Grievous Bodily Harm and sexual offences.

Total number of Great Ashby monthly reported crimes Dec 2016 to July 2021

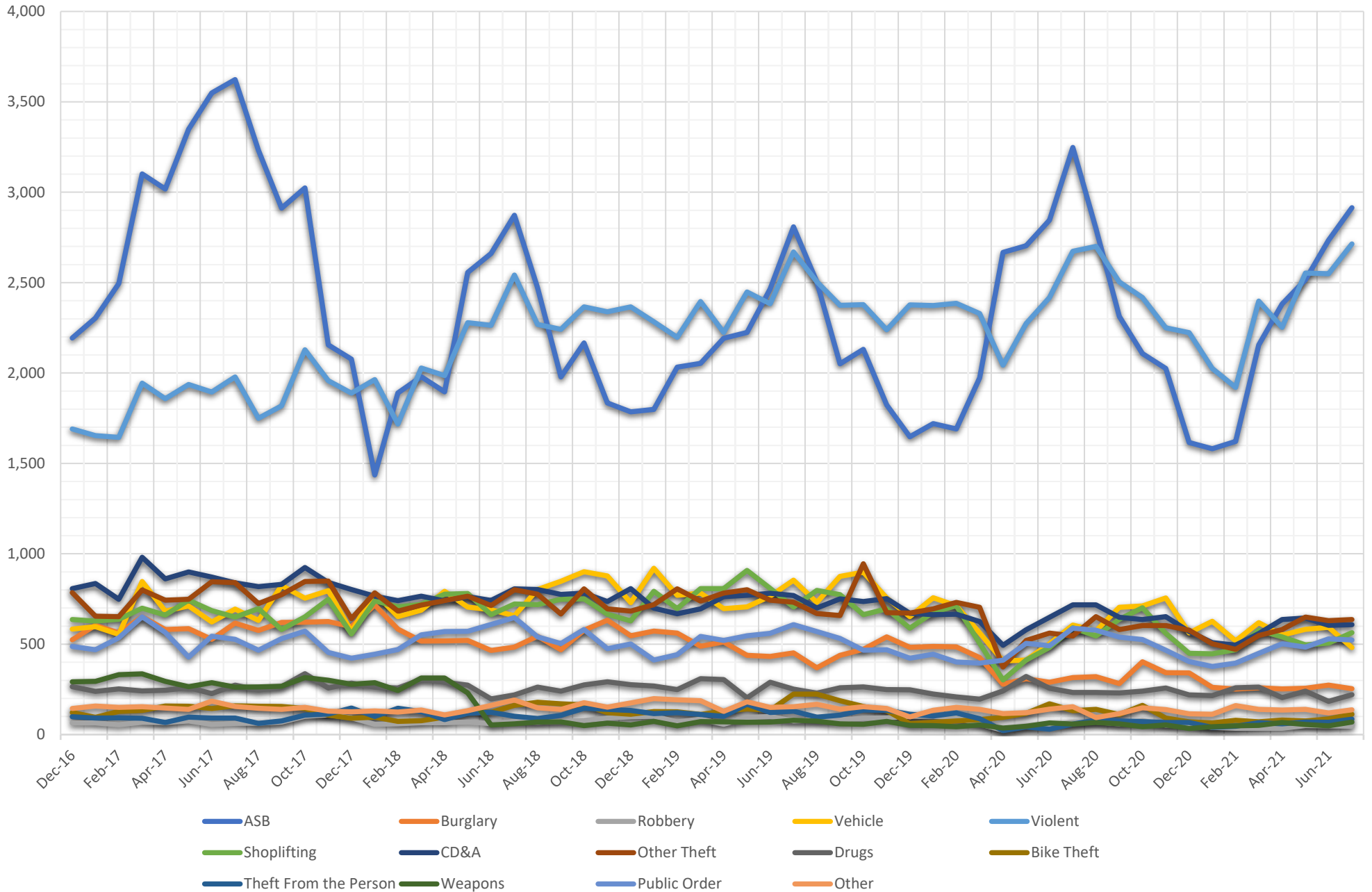


Great Ashby forms part of the Hitchin Rural policing neighbourhood which has historically seen the lowest number of recorded crimes compared to the other 32 Hertfordshire policing neighbourhoods.

The increase in anti-social behaviour during the Covid-19 summer 2020 period dropped back to more typical levels. Overall the trend for total number of reported crime for Great Ashby remains level, as shown in the above chart.

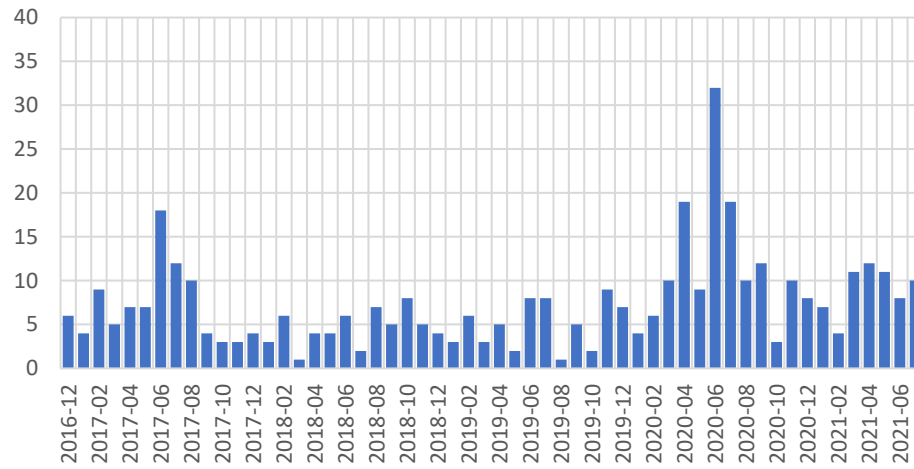
The chart on page 3 is included to display the police crime data for the wider Hertfordshire area. The Hertfordshire chart shows similarities to Great Ashby where anti-social behaviour rose to a peak in June and diminished in the following months. It also demonstrates a clear seasonal trend and shows the impact of Covid-19 e.g. the drop in shoplifting, burglary, vehicle, theft related crimes during lockdown.

Total Number of crimes by category for Hertfordshire Dec 2016 to Jul 2021

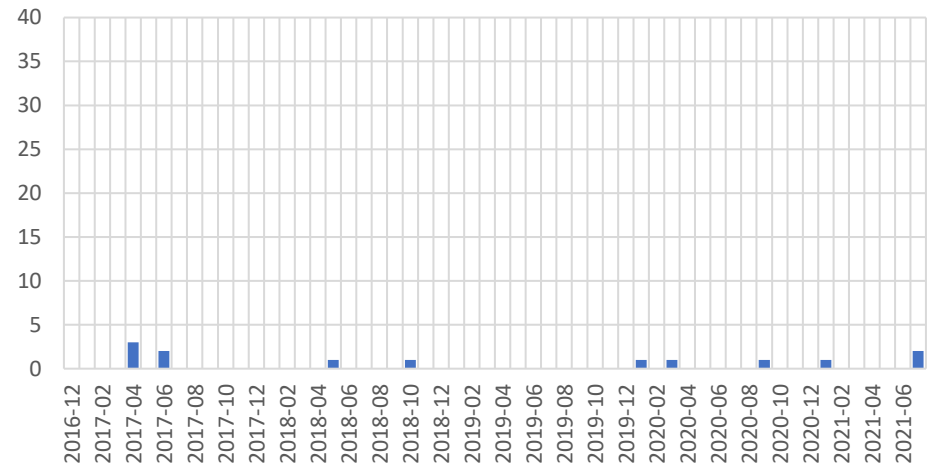


Total Number of Great Ashby monthly reported crimes Dec 2016 to Jul 2021

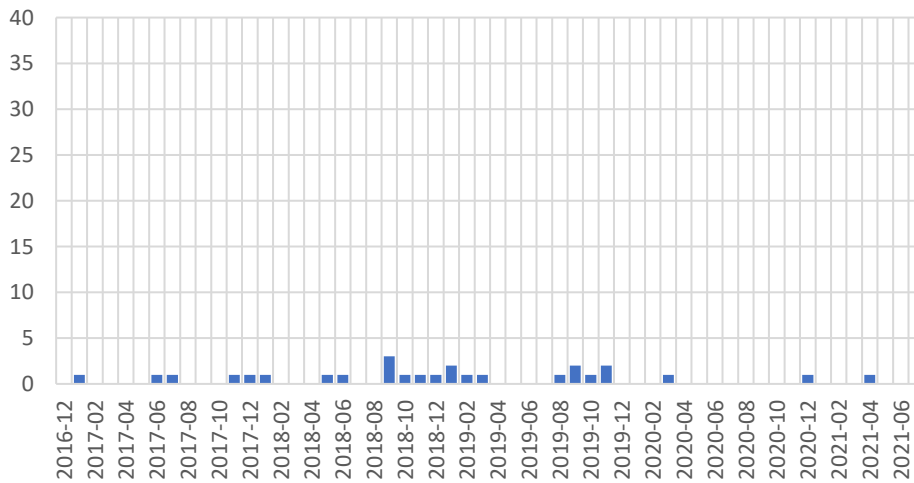
Anti-social behaviour



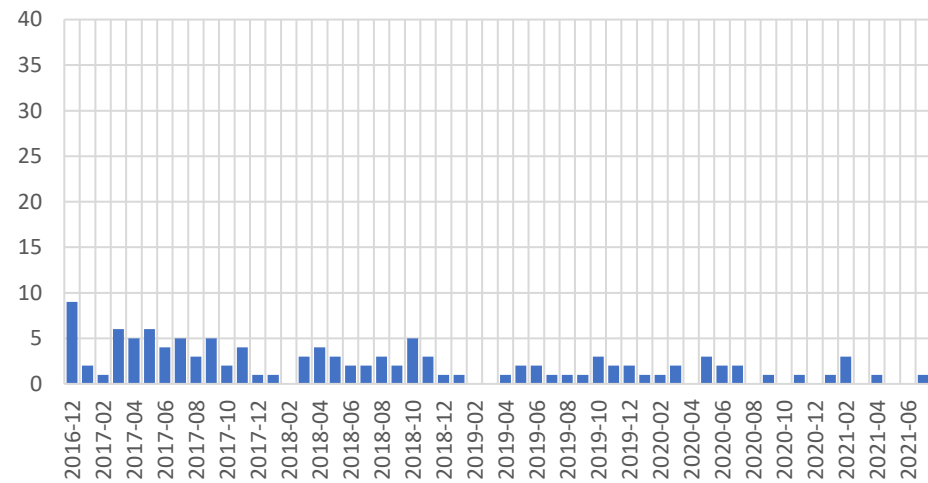
Bicycle theft



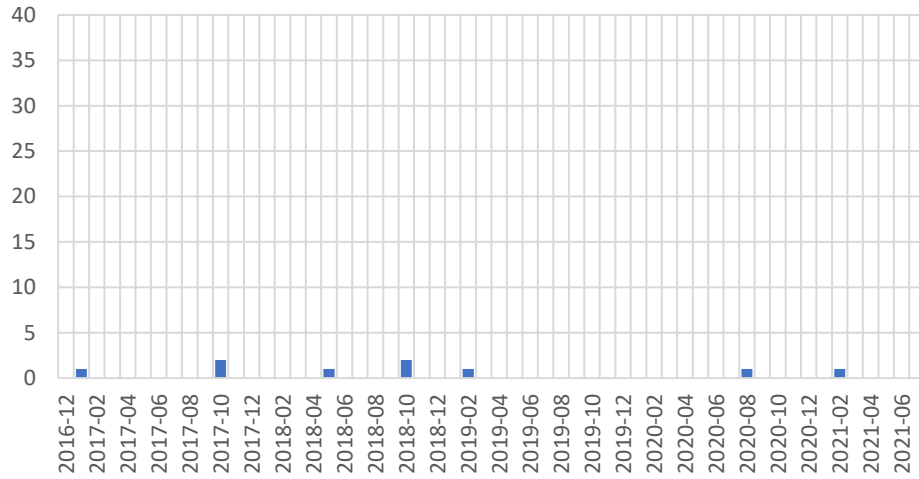
Burglary



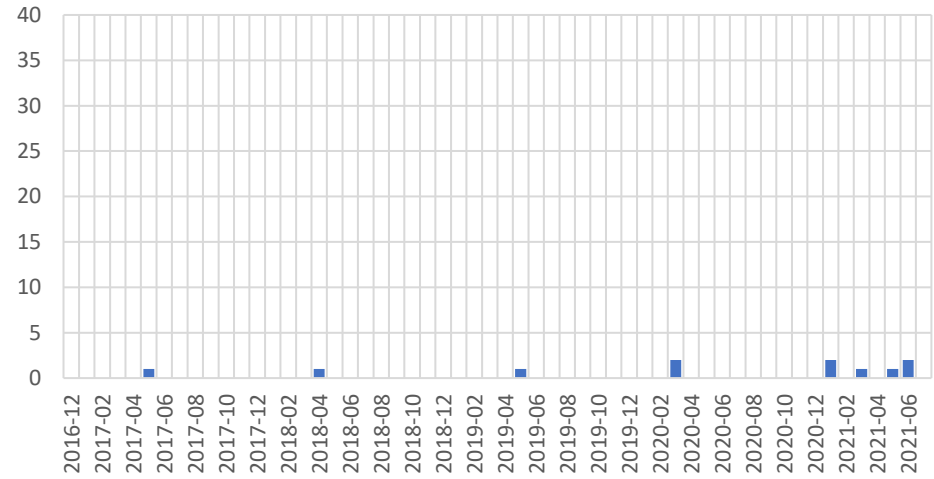
Criminal damage and arson



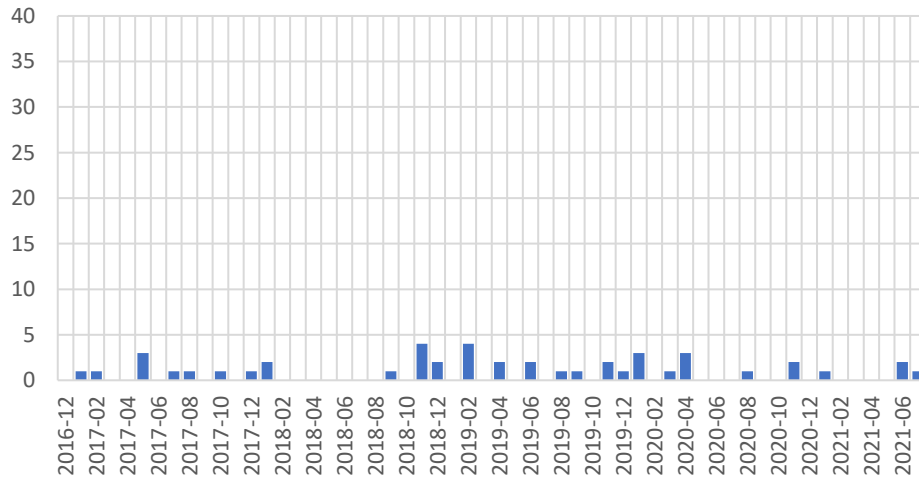
Drugs



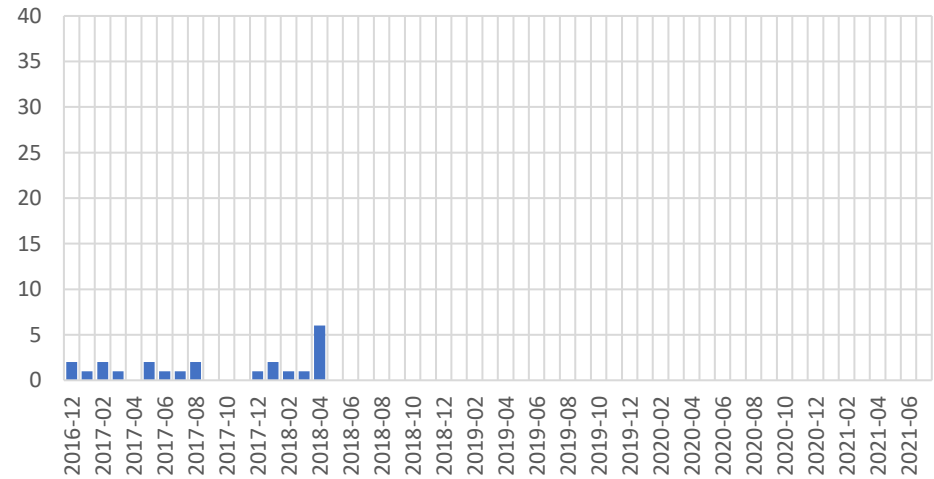
Other crime



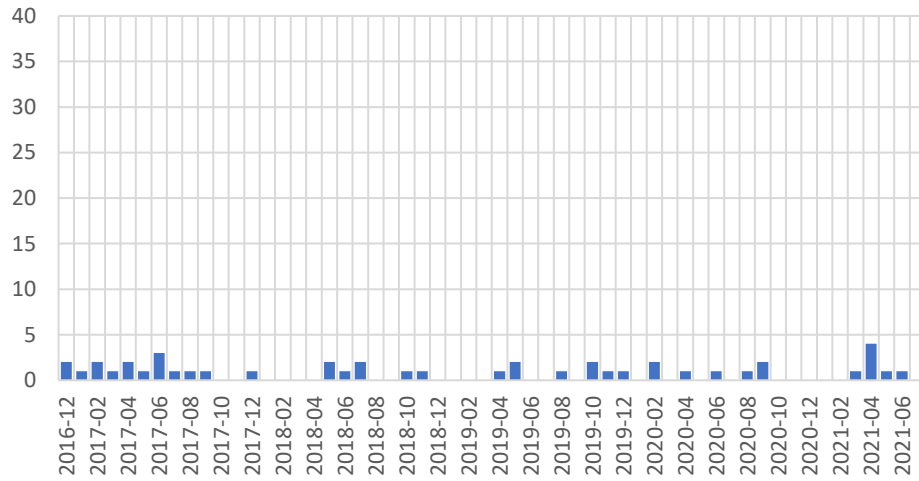
Other theft



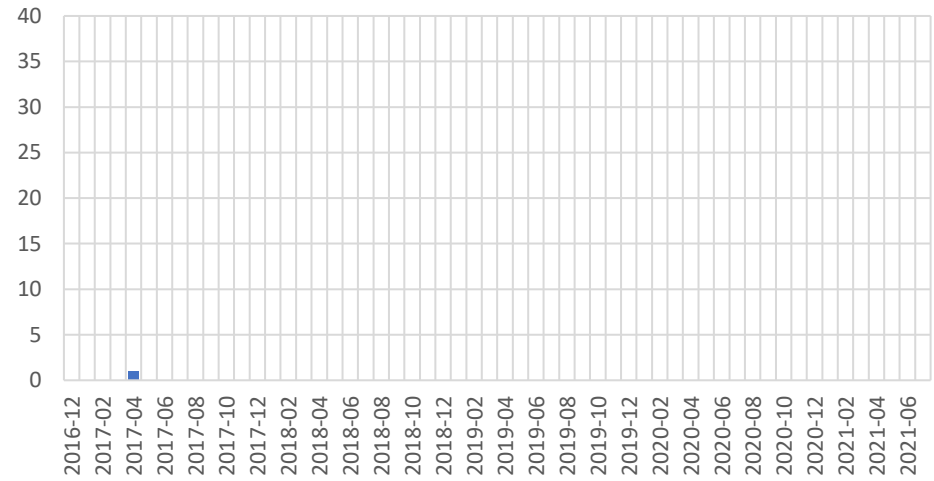
Possession of weapons



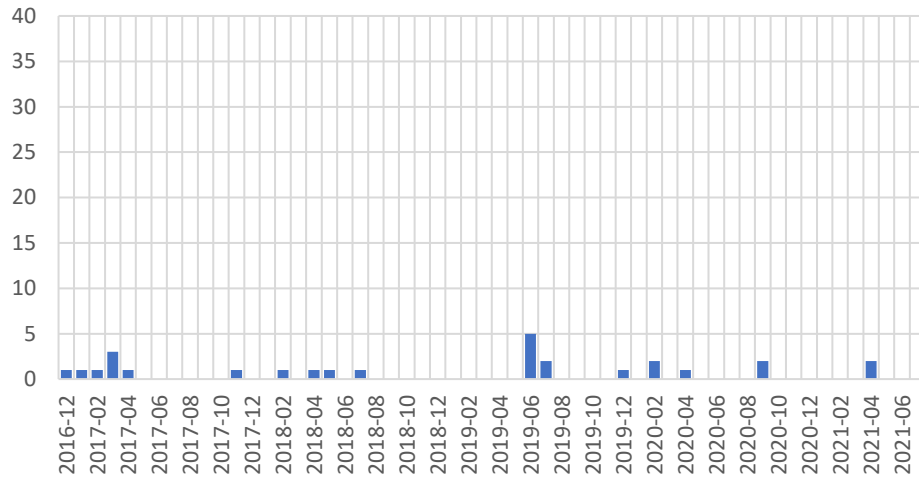
Public order



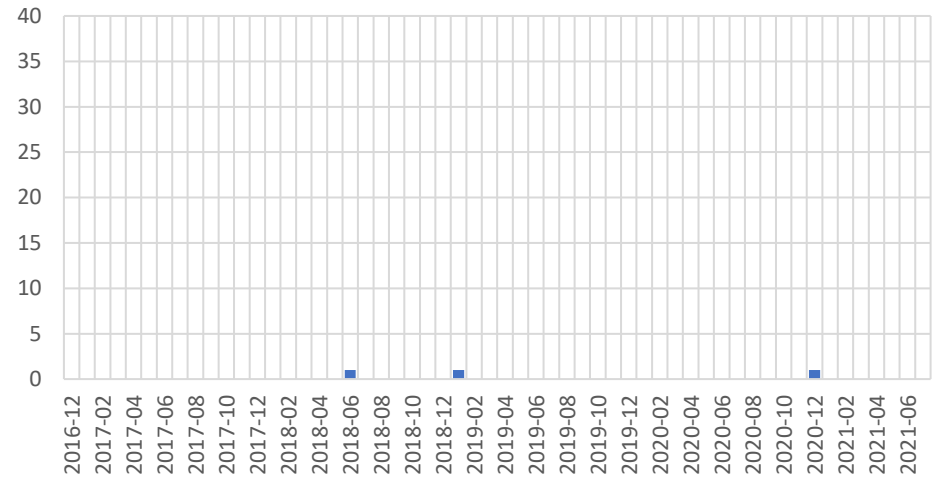
Robbery



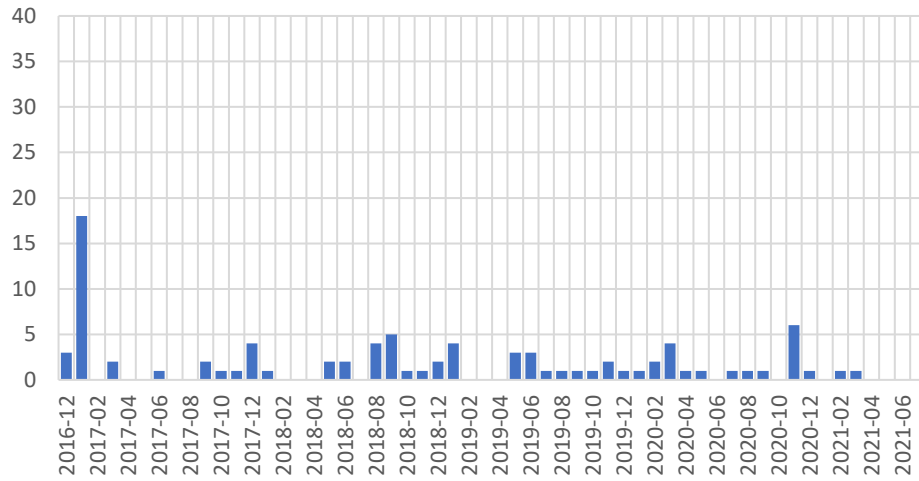
Shoplifting



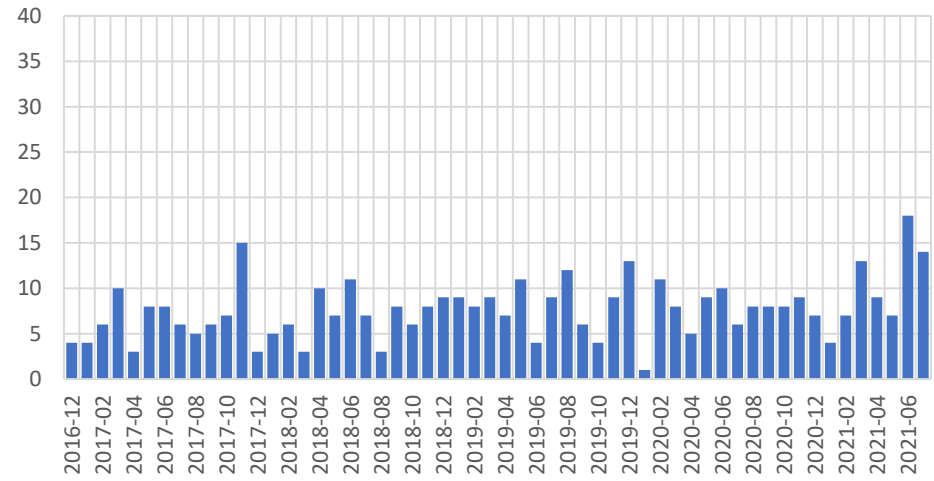
Theft from the person



Vehicle crime



Violence and sexual offences



Great Ashby crime data Dec 2016 to present

Year	2017												2018												2019												2020												2021									
Month	12	1	2	3	4	5	6	7	8	9	10	11	12	1	2	3	4	5	6	7	8	9	10	11	12	1	2	3	4	5	6	7	8	9	10	11	12	1	2	3	4	5	6	7	8	9	10	11	12	1	2	3	4	5	6	7		
Anti-social behaviour	6	4	9	5	7	7	18	12	10	4	3	3	4	3	6	1	4	4	6	2	7	5	8	5	4	3	6	3	5	2	8	8	1	5	2	9	7	4	6	10	19	9	32	19	10	12	3	10	8	7	4	11	12	11	8	10		
Bicycle theft	0	0	0	0	3	0	2	0	0	0	0	0	0	0	0	0	0	0	1	0	0	0	0	1	0	0	0	0	0	0	0	0	0	0	0	0	0	0	0	0	0	0	0	0	1	0	0	0	0	0	0	0	0	0	2			
Burglary	0	1	0	0	0	0	1	1	0	0	0	1	1	1	0	0	0	1	1	0	0	3	1	1	1	2	1	1	0	0	0	0	1	2	1	2	0	0	0	1	0	0	0	0	0	0	0	1	0	0	0	1	0	0	0			
Criminal damage and arson	9	2	1	6	5	6	4	5	3	5	2	4	1	1	0	3	4	3	2	2	3	2	5	3	1	1	0	0	1	2	2	1	1	1	3	2	2	1	1	2	0	3	2	2	0	1	0	1	0	1	3	0	1	0	0	1		
Drugs	0	1	0	0	0	0	0	0	0	0	2	0	0	0	0	0	0	1	0	0	0	0	2	0	0	0	1	0	0	0	0	0	0	0	0	0	0	0	0	0	0	0	0	0	0	0	1	0	0	0	0	0	0	0	0			
Other crime	0	0	0	0	0	1	0	0	0	0	0	0	0	0	0	0	0	1	0	0	0	0	0	0	0	0	0	0	0	0	0	0	0	0	0	0	0	0	0	0	0	0	0	0	0	0	0	2	0	1	0	1	2	0				
Other theft	0	1	1	0	0	3	0	1	1	0	1	0	1	2	0	0	0	0	0	0	0	1	0	4	2	0	4	0	2	0	2	0	1	1	0	2	1	3	0	1	3	0	0	0	1	0	0	2	0	1	0	0	0	2	1			
Possession of weapons	2	1	2	1	0	2	1	1	2	0	0	0	1	2	1	1	6	0	0	0	0	0	0	0	0	0	0	0	0	0	0	0	0	0	0	0	0	0	0	0	0	0	0	0	0	0	0	0	0	0	0	0	0	0	0			
Public order	2	1	2	1	2	1	3	1	1	1	0	0	1	0	0	0	0	2	1	2	0	0	1	1	0	0	0	0	1	2	0	0	1	0	2	1	1	0	2	0	1	0	1	0	1	2	0	0	0	0	0	0	0	1	4	1	1	0
Robbery	0	0	0	0	1	0	0	0	0	0	0	0	0	0	0	0	0	0	0	0	0	0	0	0	0	0	0	0	0	0	0	0	0	0	0	0	0	0	0	0	0	0	0	0	0	0	0	0	0	0	0	0	0	0	0			
Shoplifting	1	1	1	3	1	0	0	0	0	0	0	1	0	0	1	0	1	1	0	1	0	0	0	0	0	0	0	0	0	0	0	0	0	0	0	0	0	0	0	0	0	0	0	0	0	0	0	0	0	0	0	0	0	0	0	0		
Theft from the person	0	0	0	0	0	0	0	0	0	0	0	0	0	0	0	0	0	1	0	0	0	0	0	0	0	0	0	0	0	0	0	0	0	0	0	0	0	0	0	0	0	0	0	0	0	0	0	0	0	0	0	0	0	0	0	0		
Vehicle crime	3	18	0	2	0	0	1	0	0	2	1	1	4	1	0	0	0	2	2	0	4	5	1	1	2	4	0	0	0	3	3	1	1	1	1	2	1	1	2	4	1	1	0	1	1	1	0	6	1	0	1	1	0	0	0			
Violence and sexual offences	4	4	6	10	3	8	8	6	5	6	7	15	3	5	6	3	10	7	11	7	3	8	6	8	9	9	8	9	7	11	4	9	12	6	4	9	13	1	11	8	5	9	10	6	8	8	8	9	7	4	7	13	9	7	18	14		

Hertfordshire crime data Dec 2016 to present

Year	2017												2018												
Month	12	1	2	3	4	5	6	7	8	9	10	11	12	1	2	3	4	5	6	7	8	9	10	11	12
Anti-social behaviour	2194	2304	2495	3101	3018	3348	3549	3623	3232	2912	3024	2155	2077	1436	1890	1980	1896	2556	2661	2872	2472	1979	2166	1835	1785
Burglary	524	604	563	652	581	586	527	617	576	621	622	626	597	717	583	517	518	521	465	484	544	469	577	633	547
Robbery	65	64	55	68	67	75	56	62	63	70	102	109	93	57	59	66	66	69	61	73	68	73	78	92	99
Vehicle	584	597	554	847	683	711	623	694	631	825	754	796	571	783	653	688	793	705	690	657	802	848	901	878	730
Violent	1691	1654	1644	1944	1858	1936	1895	1978	1750	1818	2128	1958	1888	1964	1718	2027	1986	2278	2264	2542	2269	2242	2366	2339	2366
Shoplifting	637	628	638	699	661	743	686	650	697	581	651	749	557	740	707	720	777	780	663	722	719	749	751	666	629
CD&A	808	836	748	981	861	900	871	839	818	831	924	842	803	766	741	765	740	763	742	806	802	776	783	736	808
Other Theft	785	655	653	800	744	749	846	841	725	774	847	849	641	784	683	716	741	765	714	801	777	667	806	695	683
Drugs	265	239	253	242	245	260	227	274	246	265	337	258	285	262	258	305	290	274	197	220	263	241	275	292	276
Bike Theft	122	95	129	133	158	157	145	159	157	156	145	107	90	97	73	77	97	125	124	162	179	170	164	121	113
Theft From the Person	99	91	93	90	67	96	91	92	62	75	108	114	147	100	146	127	83	118	123	102	89	106	146	139	133
Weapons	292	295	332	336	295	265	287	262	264	267	315	301	279	287	244	313	313	230	53	59	70	71	50	63	53
Public Order	488	469	536	652	565	429	544	527	467	531	572	454	422	444	470	551	570	571	609	647	540	504	581	475	501
Other	145	158	150	154	147	140	185	155	146	139	150	130	126	131	125	136	109	132	162	191	148	139	176	152	175

Year	2019												2020												2021						
Month	1	2	3	4	5	6	7	8	9	10	11	12	1	2	3	4	5	6	7	8	9	10	11	12	1	2	3	4	5	6	7
Anti-social behaviour	1799	2032	2054	2192	2224	2465	2809	2504	2051	2131	1823	1648	1720	1691	1974	2667	2704	2846	3248	2799	2313	2108	2025	1616	1581	1622	2155	2382	2516	2735	2915
Burglary	572	562	489	512	439	432	452	370	438	472	541	483	488	485	426	279	309	290	316	320	282	403	343	341	261	252	259	253	257	274	254
Robbery	101	71	86	57	95	100	75	81	82	90	93	101	101	93	58	24	49	52	68	70	60	78	52	57	40	35	35	35	50	48	46
Vehicle	920	771	783	697	706	765	854	731	875	898	756	653	757	713	563	407	413	502	606	574	704	712	756	563	627	518	619	550	582	594	482
Violent	2283	2197	2395	2224	2448	2383	2670	2505	2374	2378	2239	2377	2373	2385	2329	2043	2273	2418	2673	2701	2504	2417	2250	2223	2025	1920	2398	2253	2553	2549	2714
Shoplifting	793	697	808	807	908	809	705	797	774	664	695	589	676	713	505	302	413	482	591	545	638	702	560	450	447	469	576	541	496	506	564
CD&A	699	669	696	763	771	781	769	700	751	736	752	671	663	666	625	494	580	649	718	718	649	636	653	570	508	495	559	636	645	605	608
Other Theft	719	806	738	783	801	744	733	670	659	945	675	672	695	731	704	374	521	562	546	652	581	603	603	577	503	472	548	581	650	630	636
Drugs	269	249	309	304	204	289	252	229	259	264	249	248	224	208	196	242	322	257	233	233	231	240	258	220	216	259	263	205	240	184	221
Bike Theft	127	126	111	130	142	135	224	224	188	156	132	61	68	76	83	95	117	170	132	140	111	162	92	71	64	79	71	81	76	87	112
Theft From the Person	116	121	111	101	168	122	130	97	107	136	135	113	103	120	88	22	42	30	58	81	75	72	67	67	40	46	66	60	70	68	85
Weapons	73	48	72	71	68	69	79	74	60	57	73	51	50	43	53	36	46	65	58	67	59	44	53	34	44	49	51	67	56	49	69
Public Order	413	442	543	521	547	560	608	570	532	467	469	422	445	401	395	411	505	491	589	577	539	526	467	404	377	395	449	503	484	529	523
Other	199	192	188	128	181	151	154	168	141	154	145	98	135	150	140	116	121	141	154	94	116	148	138	115	113	160	140	136	140	120	137